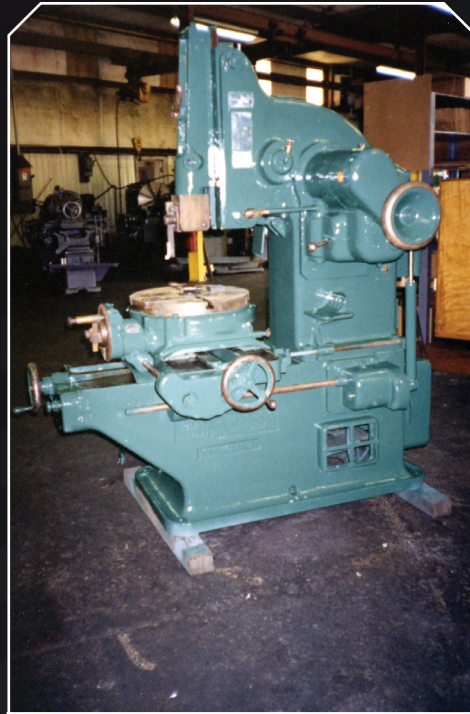
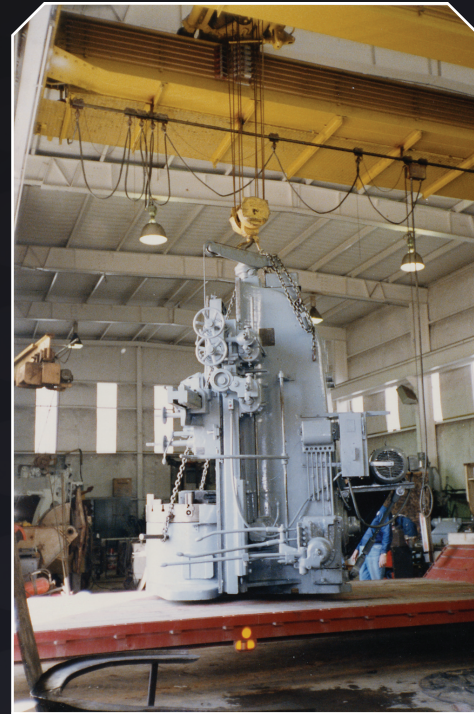


*“We
maintain
a machine
tool
inventory
at our
facility.”*



Reconditioned vertical slotter



Bullard vertical Turret Lathe
- loaded on customers truck

Lilly

machinery, inc.

MACHINING

FABRICATION

REPAIR SERVICES

ASSEMBLIES

MACHINE TOOLS

Lilly

machinery, inc.

P.O. Box 130655
Tyler, Texas 75713

(903) 561-6733 Phone
(903) 561-4179 Fax

Ship To Address:
10259 CR 2213
Tyler, Texas 75702

machine tools



Paul F. Lilly

Roy H. Lilly

Lilly Machinery, Inc. is a family business that was founded in 1975 by Paul F. Lilly. Based on his career in manufacturing, this hardworking visionary recognized the need in the East Texas area for a reputable supplier of quality used machine tools to industry. He began buying and selling used metalworking machinery to fill this need. Based on his commitment to honesty, quality, and excellent service the business began to grow. Today we continue our presence in the machine tool industry. If we do not have the machine you are looking for in stock, we will locate it, bring it to our facility, and test run, make any necessary repairs and ship to your plant. We offer machine tool repair services both in house and in the customers' plant.

In 1980, the company expanded into manufacturing by providing contract machining and fabrication services. Today, we service a broad spectrum of industries such as power generation, paper, oil and gas, tire manufacturing, petrochemical, satellite communications, refractory, gas compression, plastic molding, steel, healthcare, pulp, mining, and construction. We provide complete maintenance repair and machining services for heavy equipment components, make new replacement parts for industrial equipment and machinery, as well as provide fabrication services, ranging from very small parts to heavy plate steel weldments that require stress relieving and full machining. We partner and have alliances with OEMs. We manufacture their parts and components and ship them direct to their customers. We have a very diverse, highly skilled group of employees who have been trained to provide "quick turn" service in a highly specialized job shop environment.

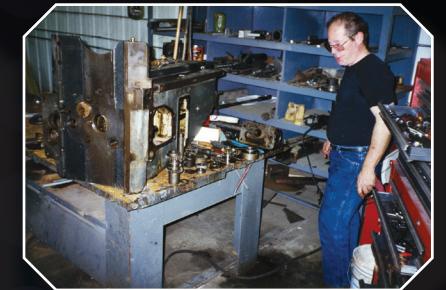
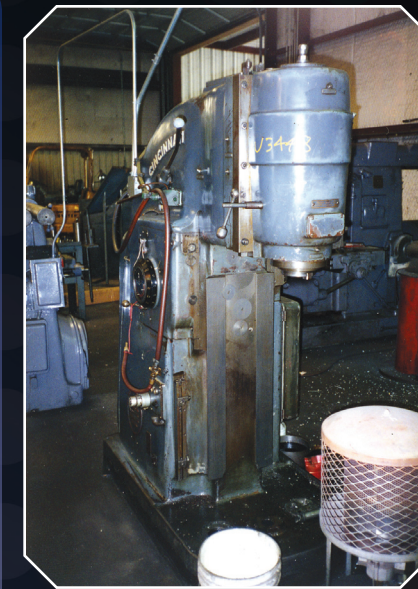
Our commitment is to continue to grow our business based on the fundamentals on which it was built:

- **To be uncompromising and steadfast in our commitment to honesty**
- **To provide superior quality and workmanship**
- **To provide excellent service.**

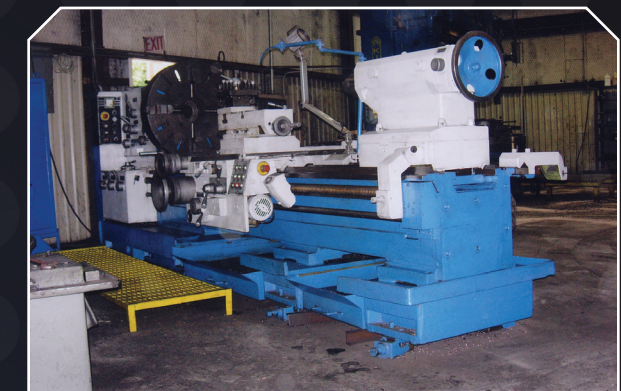
Our business began in machine tool sales, and it continues to be an integral part of our business today. We offer a variety of services regarding machine tools. We maintain a small inventory of machine tools for sale at our facility. However, our specialty is locating machine tools to suit the customers' particular need. We have many sources for good used machine tools. We have the facilities and personnel to locate the machine that the customer wants, bring the machine to our shop, completely test run and make any necessary adjustments and/or repairs, clean and paint, and test run for customer approval.

We can help customers with any of their repair needs for their machine tools. We will go to the customers plant or bring their machine to our facility to perform repair services. We have the capability to do mechanical repairs, electronic, pneumatic and hydraulic work, and control work.

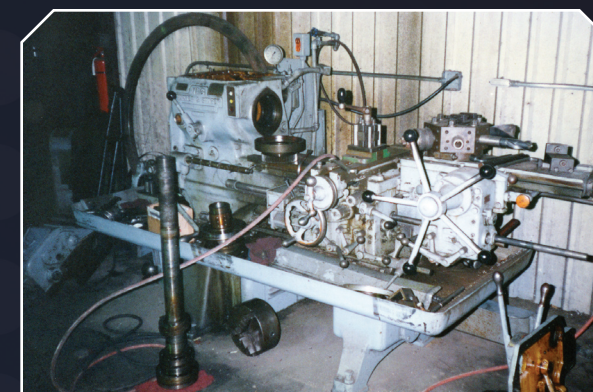
We make special machines tailored to customer specifications to perform specific manufacturing processes. These machines range from completely fabricated, "Built from the ground up" machines, to machines built by utilizing a machine tool base and modifying as needed.



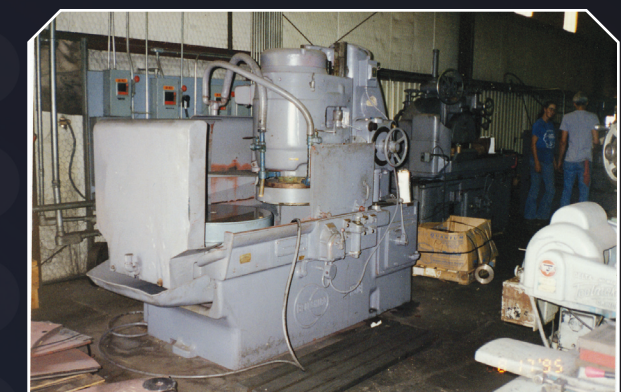
Cincinnati Vertical Mill- Removed knee, disassembled, replaced bearings, seals and repaired as needed



Reconditioned Engine lathe



Warner & Swasey Turret Lathe-Repairing headstock



Blanchard Grinder

assemblies

We have the capability of turnkey manufacturing any of your assembly requirements. We can work from either your detailed drawings or your old assemblies. We can fabricate any structures required, machine the components, purchase the buyout items, completely assemble, do the control work and test run in our plant.



Drum for material roll



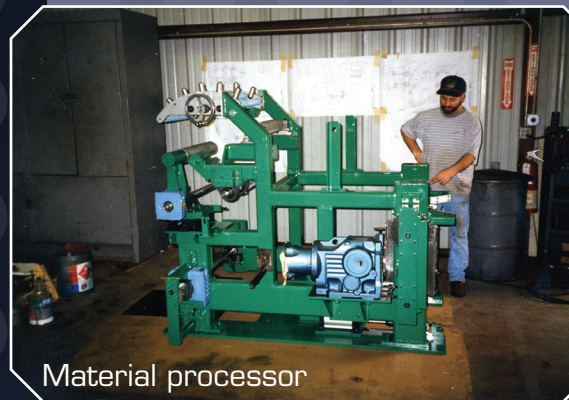
Material roll



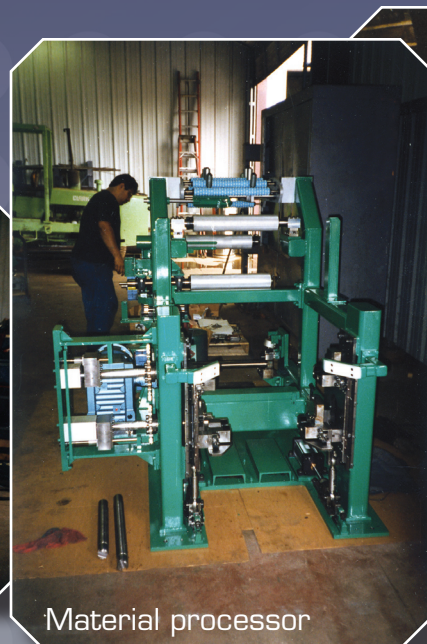
Machining shear frame



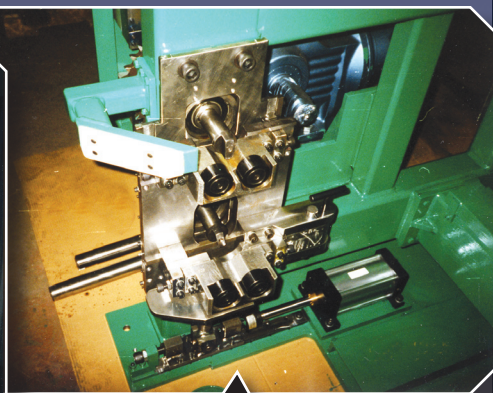
Shear-assembled



Material processor

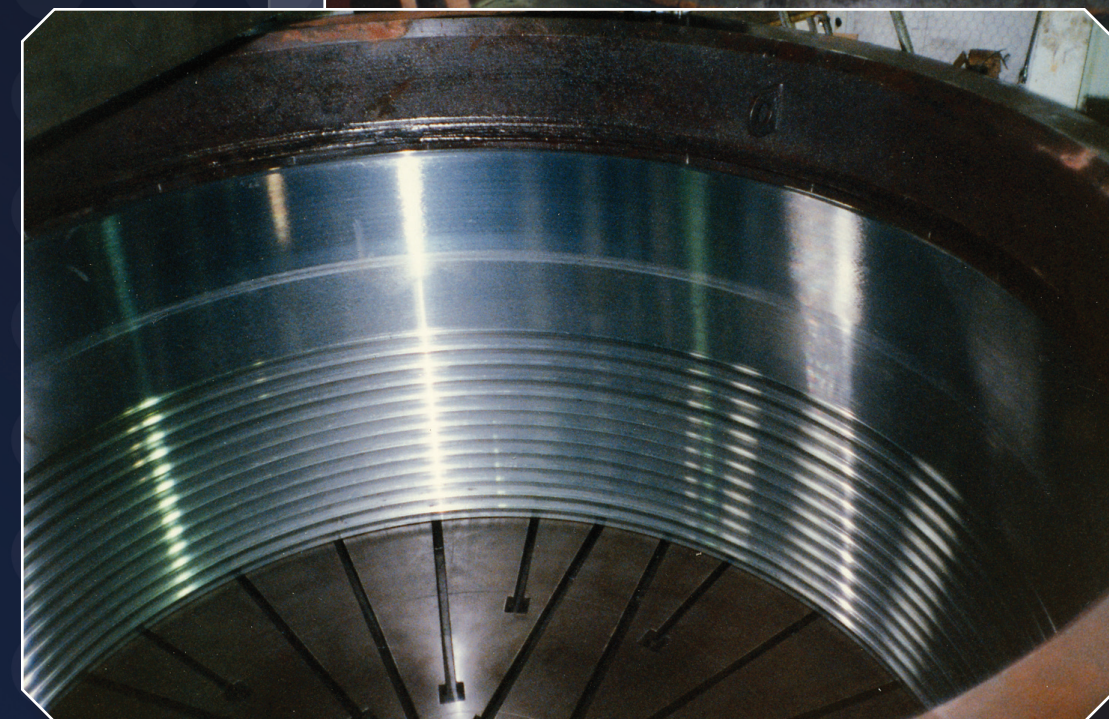
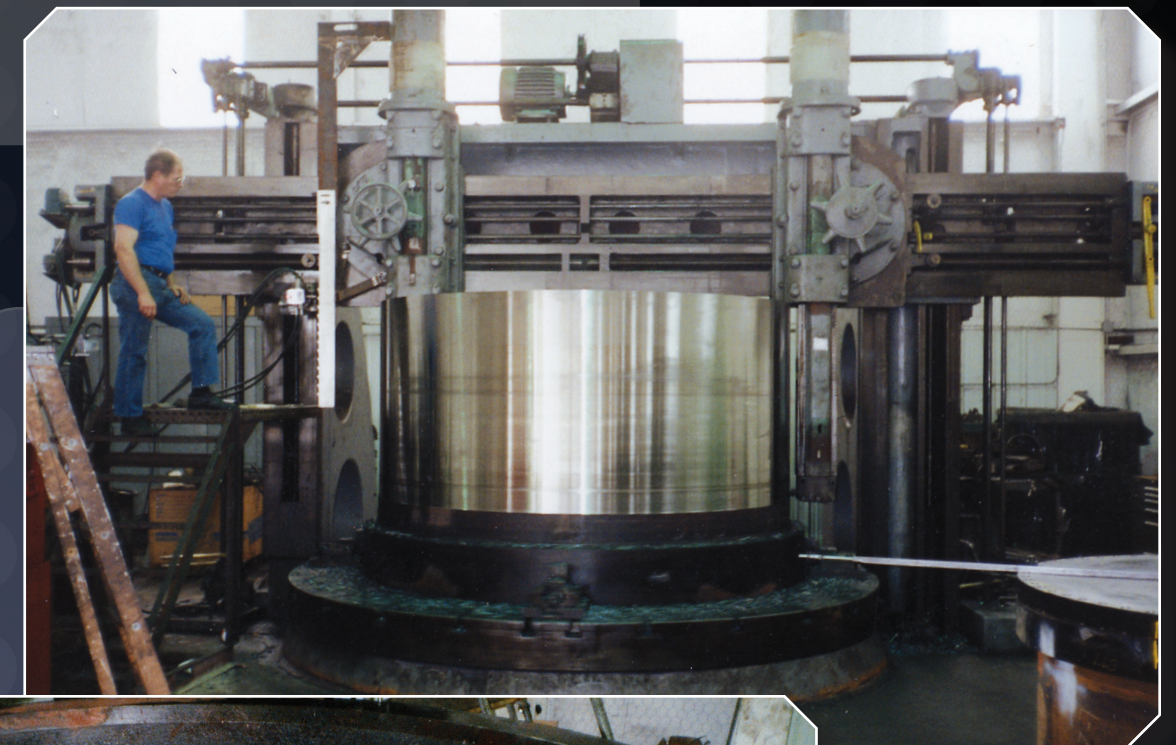


Material processor



Mechanical detail material processor

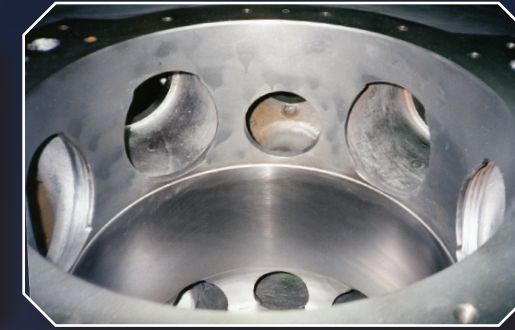
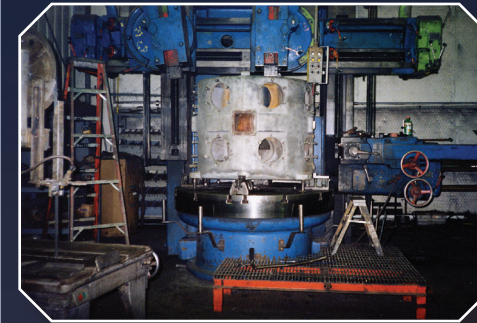
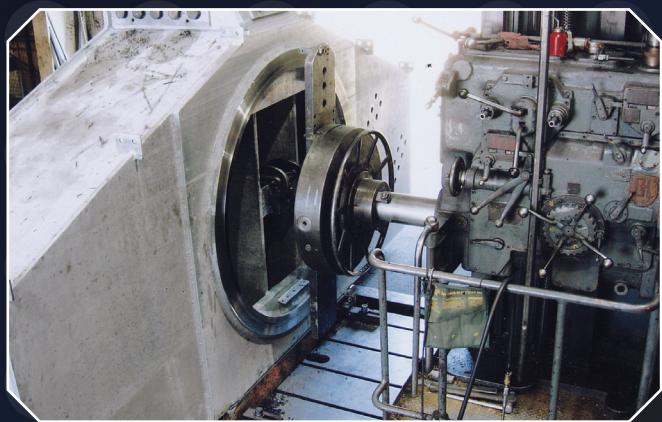
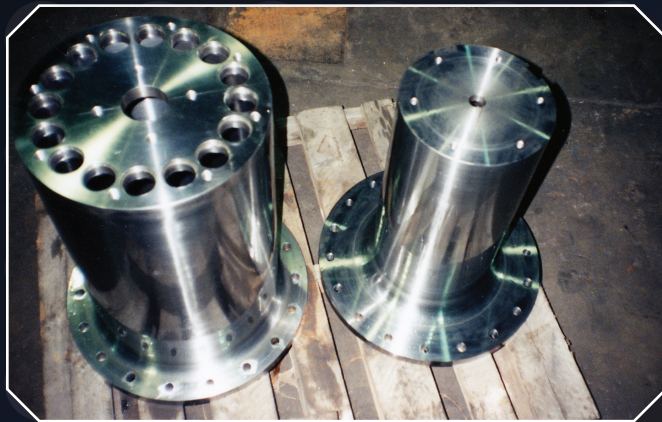
machining



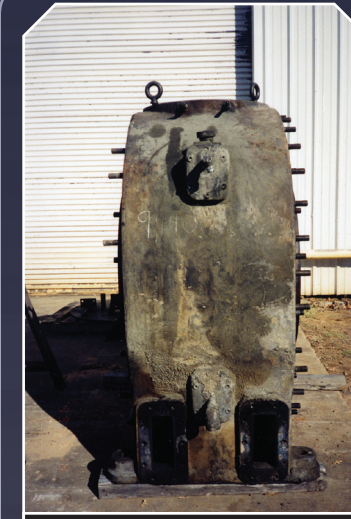
We have a complete machining operation servicing many areas of industry. We are very diversified in our machining capabilities. We have turning, milling, and drilling capabilities for very small parts as well as very large parts that require vertical turning and boring operations and horizontal boring and milling. We are always responsive and specialize in emergency and "quick turn" situations. For repeat items, we extend standard lead times. We stock parts that have a history of order frequency. We will accommodate any job, large or small.



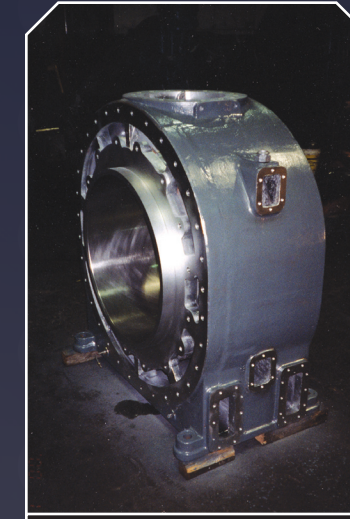
- Highly skilled and versatile machinists and craftsmen
- Complete quality control, inspection, and documentation on all jobs
- Stocking programs based on customer needs and order frequencies
- Inventory maintained of raw materials that typically have long lead times allowing us to respond rapidly to customer needs. Such materials include plate, forgings, castings, and certain bar stocks.
- CNC capabilities for production runs
- Excellent outside suppliers for heat treat, chrome plating, and other specialized services
- One-piece maintenance type replacement parts as well as multiple pieces for inventory purposes
- Excellent raw material sources
- Turning capability up to 144 inches
- Excellent transportation services
- New replacement parts manufactured per customer specifications



Compressor Cylinder
- Relined



Compressor Cylinder
Before Reline



Compressor Cylinder
After Reline



Cable Drum - Duplicated Per Sample



Rubber Extrusion Screws
-Inspected, repaired, and replaced bearings and seals



Circulating Water Pump
-Sandblasted, replaced bushings and bearings, machined flanges to reclaim fits. Applied coating, precision aligned and dowelled flanges, dis-assembled and delivered to customer.



Pump Impeller
Repaired with bronze build up

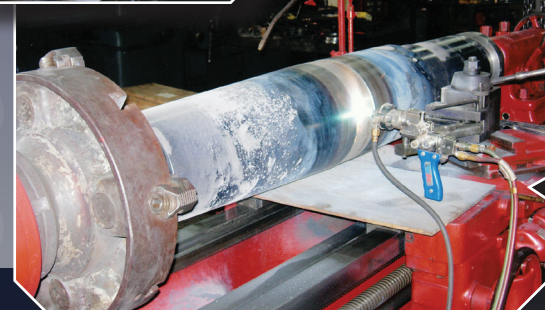
repair services

We are a complete job shop and we are very versatile in maintenance type repairs. We specialize in rapid response, turn key repairs to all types of industry. We analyze the situation, price the job and give a firm delivery up front, make the necessary drawings, procure the materials needed (either from our inventory of raw material and/or purchase the necessary materials from our complete portfolio of suppliers), and rely upon our highly skilled group of employees to expedite the job in a timely manner resulting in minimal downtime to the customer.

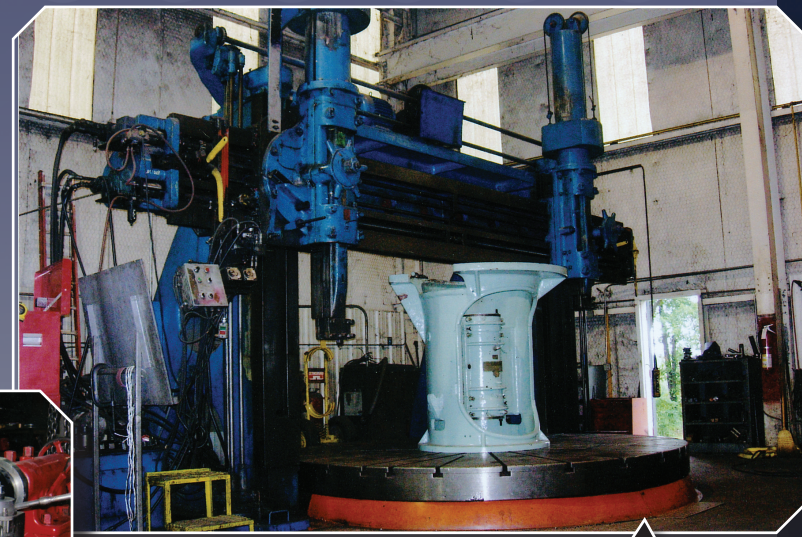
- Design weldments to replace castings – eliminating costly down time
- Highly skilled and experienced workforce gives the flexibility needed to dedicate manpower to expedite your particular needs
- Complete turnkey service – trucking to and from the jobsite, any outside services that might be required, as well as the complete services that we provide in our plant
- Complete inspection and documentation both at the jobsite as well as at our facility upon completion of your project
- Metal spray capabilities – cast iron, steel, bronze, as well as specialty coatings
- Raw material inventory of plate steel, miscellaneous structural steel, as well as mild steel and carbon steel bar stock
- Certified fitters/welders, machinists & millwrights
- Pneumatic, hydraulic, and electrical control expertise
- Repair services provided in our plant, at the jobsite, or in customers' plant
- Build up for repair purposes utilizing our sub arc capability
- Weld positioners for heavy fabrication and repair
- Lifting capabilities to 40,000 lbs



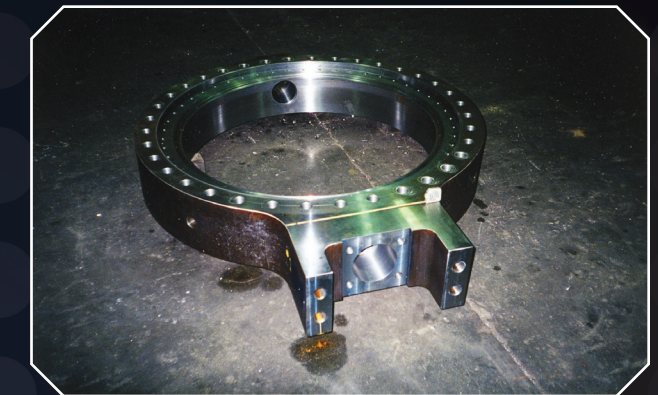
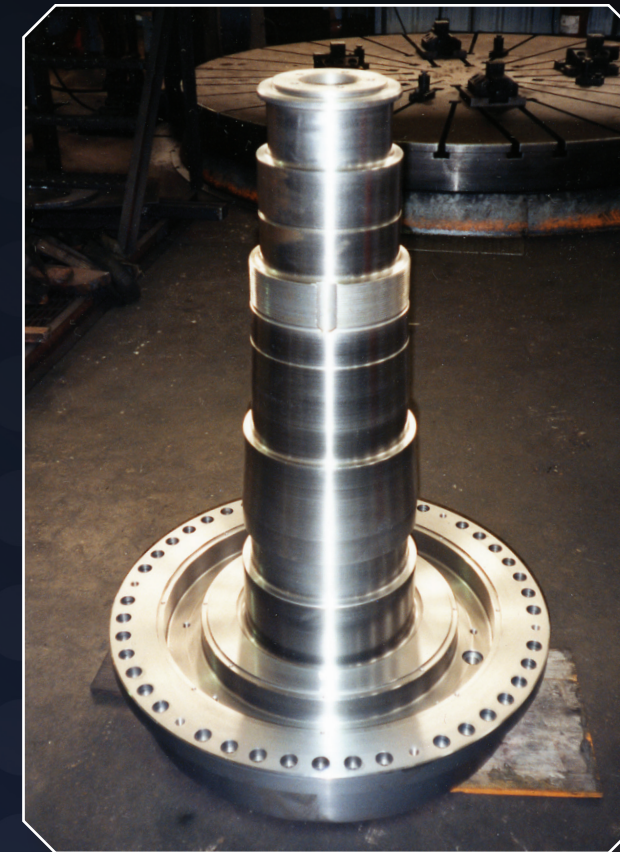
CABLE DRUM
DUPLICATED
PER SAMPLE



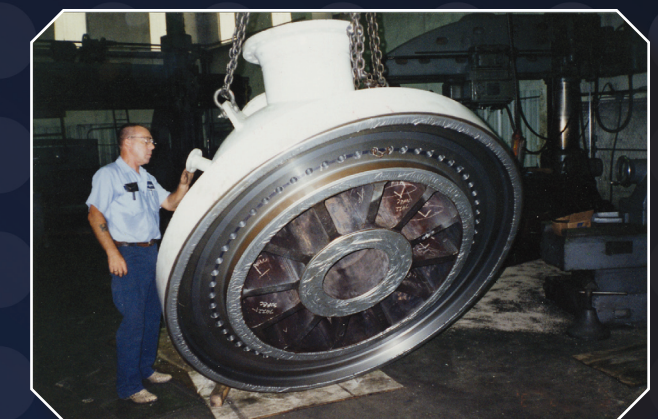
METAL SPRAYING
SHAFT



144" BETTS
VBM



"We have turning, milling, and drilling capabilities for very small parts as well as very large parts."



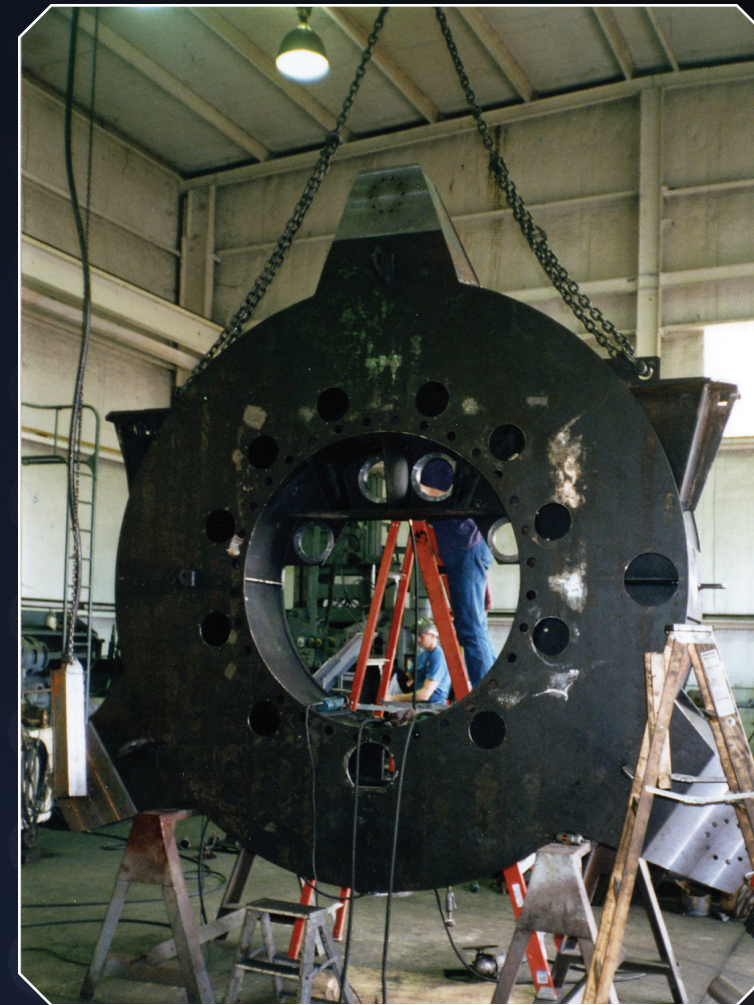
fabrication



Fabrication is a major component in all that we do. A big part of our work entails fabricating a weldment and machining it. We employ highly skilled fitters and welders who are certified in various procedures. We process materials in house such as burning, cutting, and forming. For very heavy and complex forming we work with a highly skilled group of outside suppliers. We perform all fit up and welding in house. We send most of our weldments out to be stress relieved if they require machining.



- Automatic burning machine
- Sub arc welding for heavy fabrication and buildup for maintenance repairs
- Mig, tig, and stick welding
- Plate rolling
- Stress relieving and heat treating
- Independent testing when required
- Small sheet metal type fabrication to heavy steel fabrications
- Aluminum fabrication



“Fabrication is a major component in all that we do.”

